



## **F-16 AIS Adv Computer Replacement**

Run the same test program software without any changes!

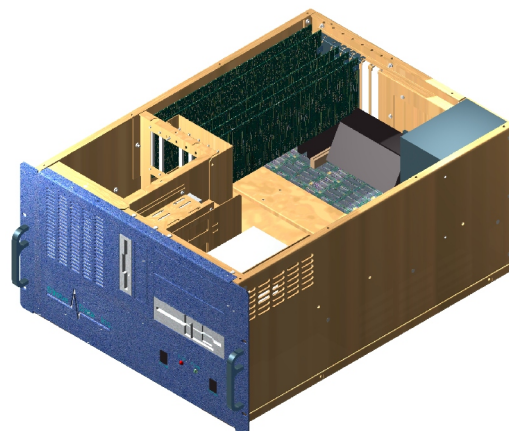
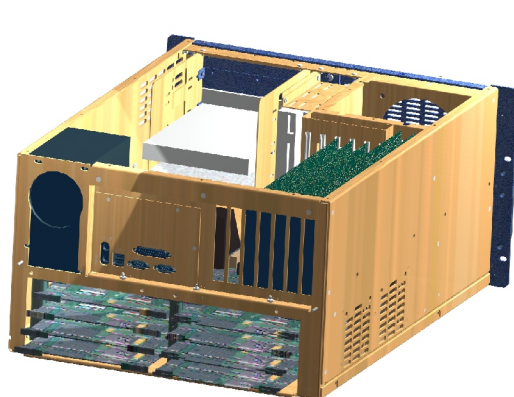


### **Replace that HP 1000 A900 computer today without any changes in the proven test software!**

Now you can replace that HP 1000-A900 Computer and eliminate those maintainability concerns with a proven PC Platform. Take advantage of Windows functionality and migration tools. Empower your old application like never before.

### **Why spend millions on a new TESTER?**

Strobe Data F-16 AIS Advanced computer replacement is already being used in the field today. More flexible, this faster HP 1000 gives you the commodity priced peripherals you count on in today's world.



# F-16 AIS Advanced Computer RMC

## Specifications Physical

<b>Construction:</b>	Heavy-duty aluminum .100" thick
<b>Indicators:</b>	LED indicates power On/Off and hard disk drive activity.
<b>Disk Drives</b>	Space for three 5.25" drives and two 3.5 drives
<b>Dimensions</b>	17" W x 10.5" H x 23" L
<b>Weight</b>	Estimated at 65 lbs
<b>Cooling</b>	3 Internal fans 2 - 2850 RPM 51.1 CFM 1 - 2100 RPM 72.4 CFM
<b>Controls</b>	Reset switch. On /Off switch on front panel.

## Power Supply PC- 510 ATX HP-Slots Ce300

### PC-510 Specifications

<b>Output Rating:</b>	<b>510</b> Watts
<b>Input Voltage:</b>	90-264VAC, .99power factor auto select.
<b>Frequency:</b>	47-63HZ
<b>Output Voltage:</b>	+5VDC@50A,+12VDC@18A, -5VDC@2A,+3.3VDC@40A, +5VSB@2A,+5 &+3.3<300W

<b>MTBF:</b>	100,000 hours
<b>Safety:</b>	UL,ULC,CE,TUV
<b>EMI:</b>	FCC-B, CE

### HP-Slots Specifications

<b>Output Rating:</b>	<b>300</b> Watts
<b>Input Voltage:</b>	85-264 VAC .90 power factor
<b>Frequency:</b>	47-63Hz
<b>Output Voltage:</b>	+5VDC@40A +12VDC @ 8A -12VDC@6A

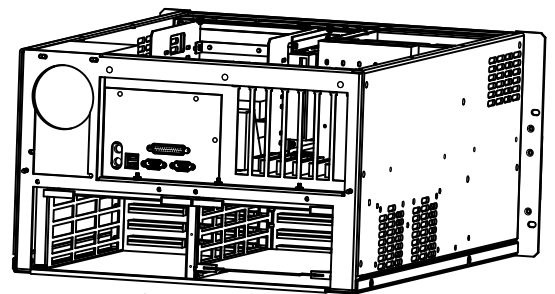
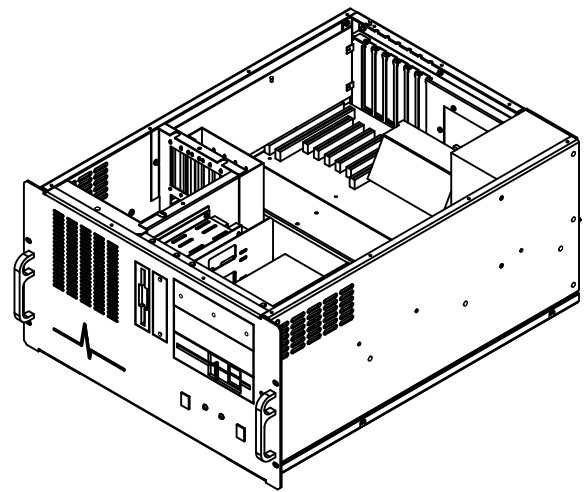
**MTBF:**

## Environmental Operating Conditions

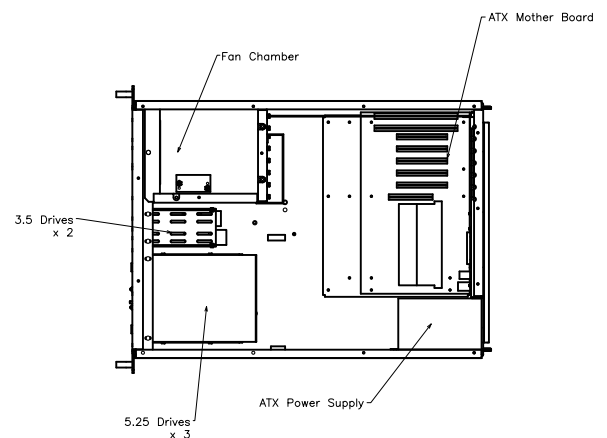
**Temperature** 5 to 50 C (41 to 122 F)

## Backplanes

<b>HP 1000</b>	10-Slot (9 useable)
----------------	---------------------



HP 1000 Slots - 10



**Strobe Data Inc.**

14940 NE 95th Street Suite B Redmond, WA. 98052

Phone: (425) 861-4940 Fax: (425) 861-4295 www.strobedata.com